

UTILITY RENTALS

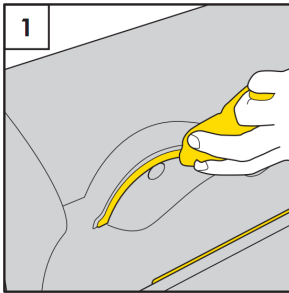
SCHOOL HIRE DIVISION

dyson
airblade

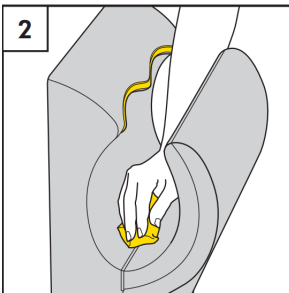
AB AB CLEANING 01 03 GUIDE

Cleaning should be performed at least daily or as part of the washroom cleaning regime using a cloth or soft brush.

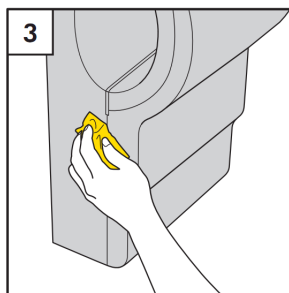
DO NOT USE BLEACH OR ABRASIVE CLEANERS.



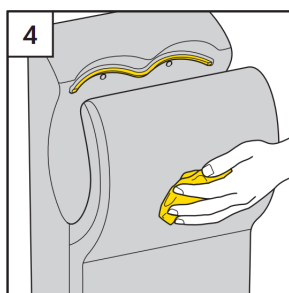
1 Clean the edges of the air slots.



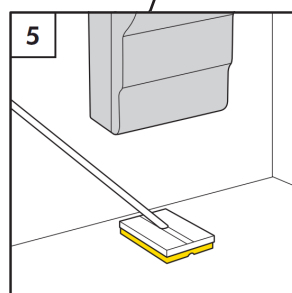
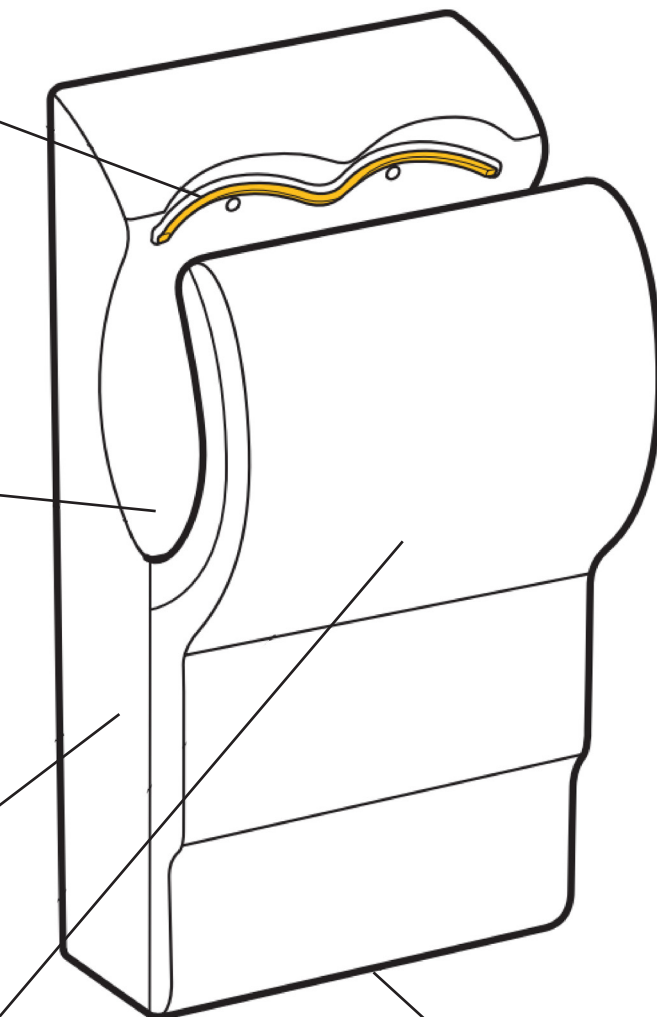
2 Particular attention should be paid to the seals.



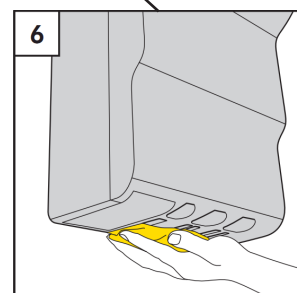
3 Clean the sides of the machine.



4 Wipe all surfaces with a soft cloth and non abrasive cleaner.



5 Clean the floor beneath and around the machine.



6 Clear the air inlet on base REGULARLY.